

Description

ORALITE® Brilliance® Series GP801 reflective trim is designed for sew-on application to heavy duty and premium value high visibility safety apparel such as insulated jackets, breathable rainwear, uniforms, etc. The thin and flexible retroreflective garment trim offers superior brightness with a soft hand for increased wearer comfort and the smooth-sealed outer surface as described in Part 6 of the MUTCD for traffic control devices provides excellent performance in all weather conditions.

ORALITE® Brilliance® Series GP801 reflective trim complies with all the requirements for retroreflective trim in accordance with ANSI/ISEA 107-2020; and CSA Z96-2022 for Level 2 photometric performance.

Product Construction

ORALITE® Brilliance® Series GP801 reflective trim consists of a smooth surface, high gloss, abrasion and weather resistant uv-stabilized microprismatic retroreflective layer. The microprism surfaces are metalized to increase reflectivity and protect them from dirt and moisture. The trim is supplied with a knit fabric backing to facilitate sew-on applications.

Reflectivity

ORALITE® Brilliance® Series GP801 reflective trim exceeds the minimum reflectivity requirements of ANSI/ISEA 107-2020 and CSA Z96-2022 for Level 2. Typical photometric performance of ORALITE® Brilliance® Series GP801 reflective trim exceeds 1000 cd/lux/m² at the observation angle 0.20° and entrance angle +5°

Color

ORALITE® Brilliance® Series GP801 reflective trim is available in silver (daytime appearance) with a white reflected color (nighttime appearance).

Enhanced Surface Preparation

ORALITE® Brilliance® Series GP801 reflective trim is manufactured with a unique Enhanced Surface Preparation (ESP), which minimizes staining of the garment trim from fluorescent dyes as a result of bleeding from background fabrics during laundering and intimate contact. ESP also provides a glossy top surface, which is inherently resistant to soiling and allows for easy cleaning.

Wet Performance

When tested according to ANSI/ISEA 107-2020 section 10.4.6 Retroreflective Wet Performance, ORALITE® Brilliance® Series GP801 reflective trim will typically retain 70% of its photometric performance when dry.

Machine Washing

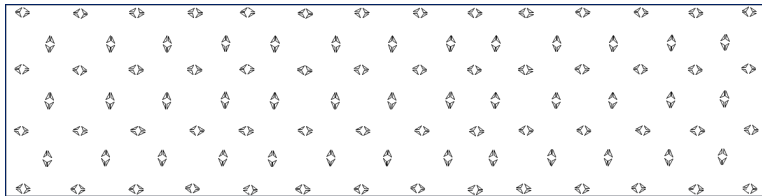
ORALITE® Brilliance® Series GP801 reflective trim when washed in accordance with ISO 6330:2012, *Textiles - Domestic washing and drying procedures for textile testing*, Method 6N; continue to perform through 100 cycles at 140°F (60°C).

Do Not Dry Clean

Application Instructions

ORALITE® Brilliance® Series GP801 reflective trim is manufactured with a knit fabric backing to facilitate sew-on applications. A stitch count of 8-10 stitches per linear inch is recommended

Film Pattern



ORAFOL Americas – GA
1100 Oracal Parkway
Black Creek, GA 31308
Phone: 888.672.2251

ORAFOL Americas – CT
120 Darling Drive
Avon, CT 06001
Phone: 800.654.7570

ORAFOL Canada
2831 Bristol Circle
Oakville, Ontario L6H 6X5
Phone: 888.727.3374

reflective-americas@orafol.com

www.orafol.com

Note:

All ORALITE® products are manufactured within an ISO 9001:2015 controlled manufacturing environment and batch traceability is possible on the basis of the roll number.

IMPORTANT NOTICE

All ORALITE® products are subject to careful quality control throughout the manufacturing process and are warranted to be of merchantable quality and free from manufacturing defects. Published information concerning ORALITE® products is based upon research which the Company believes to be reliable although such information does not constitute a warranty. Because of the variety of uses of ORALITE® products and the continuing development of new applications, the purchaser should carefully consider the suitability and performance of the product for each intended use, and the purchaser shall assume all risks regarding such use. All specifications are subject to change without prior notice.



WARNING – This product may expose you to chemicals which are known in the State of California to cause cancer and birth defects or other reproductive harm. For more information, go to – www.P65Warnings.ca.gov

ORALITE® is a trademark of ORAFOL Europe GmbH



ORAFOL Americas – GA
1100 Oracal Parkway
Black Creek, GA 31308
Phone: 888.672.2251

reflective-americas@orafol.com

ORAFOL Americas – CT
120 Darling Drive
Avon, CT 06001
Phone: 800.654.7570

www.orafol.com

ORAFOL Canada
2831 Bristol Circle
Oakville, Ontario L6H 6X5
Phone: 888.727.3374